

**M**

**PORTFOLIO**



**MAZUR  
KRZYSZTOF**

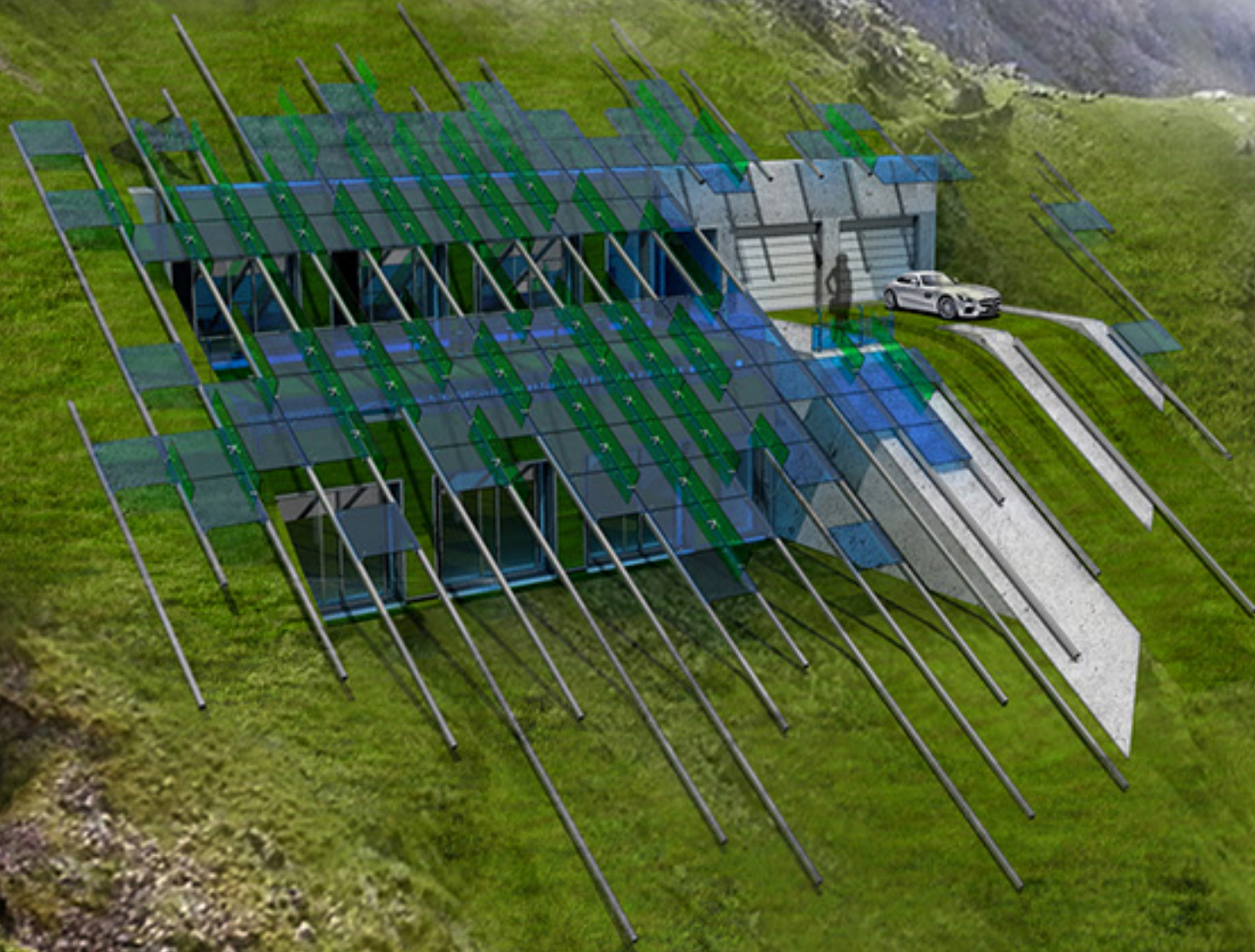
**ARCHITECTURE  
MODEL-MAKING**

# ARCHITECTURE

SINGLE FAMILY HOUSE  
PRELIMINARY AND PERMIT DESIGN

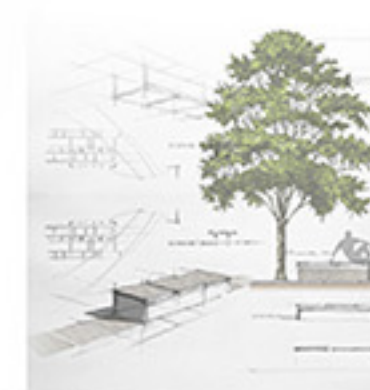
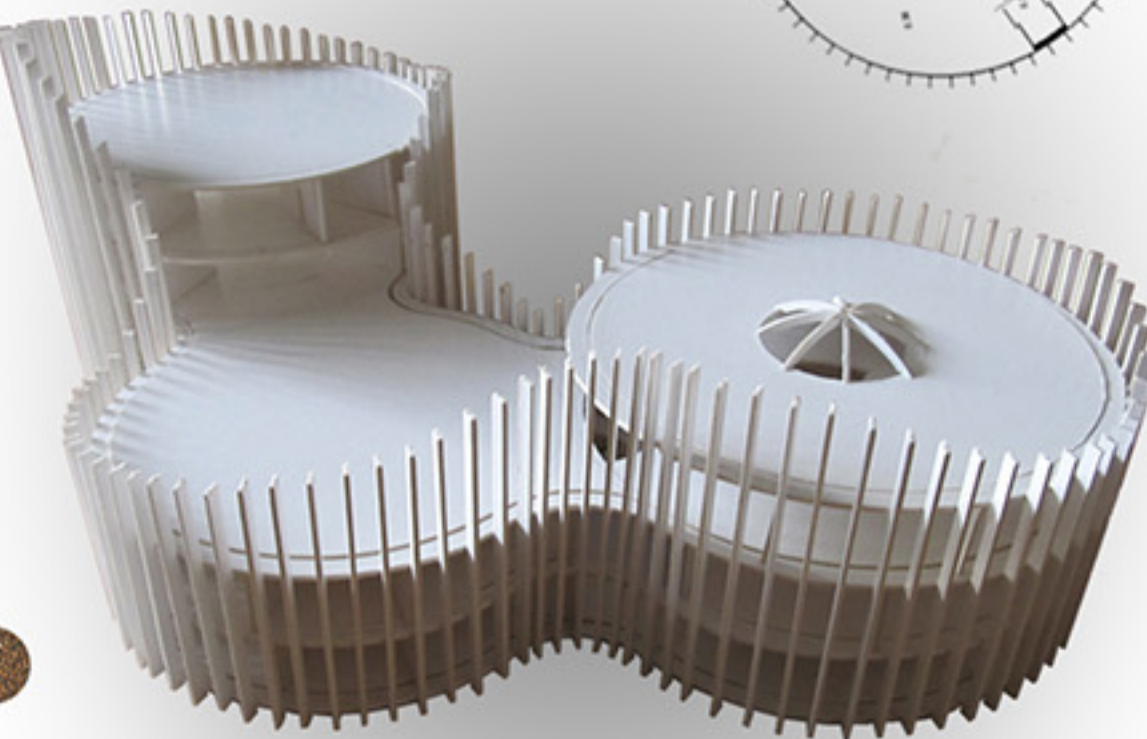
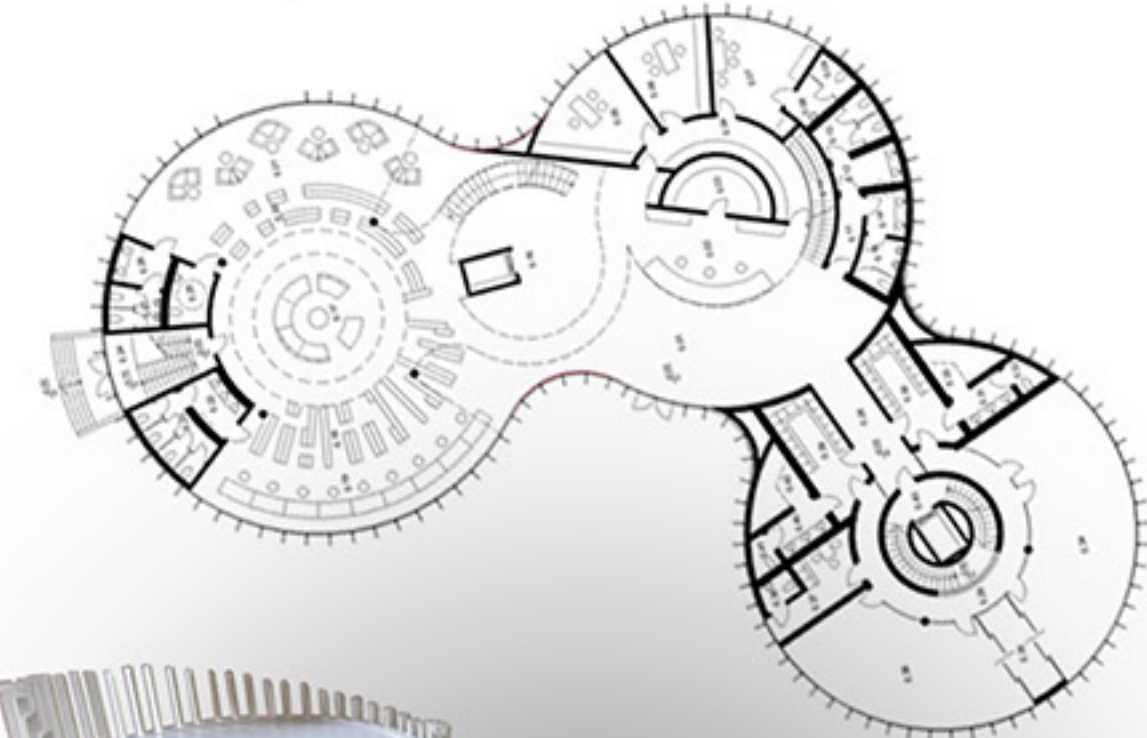
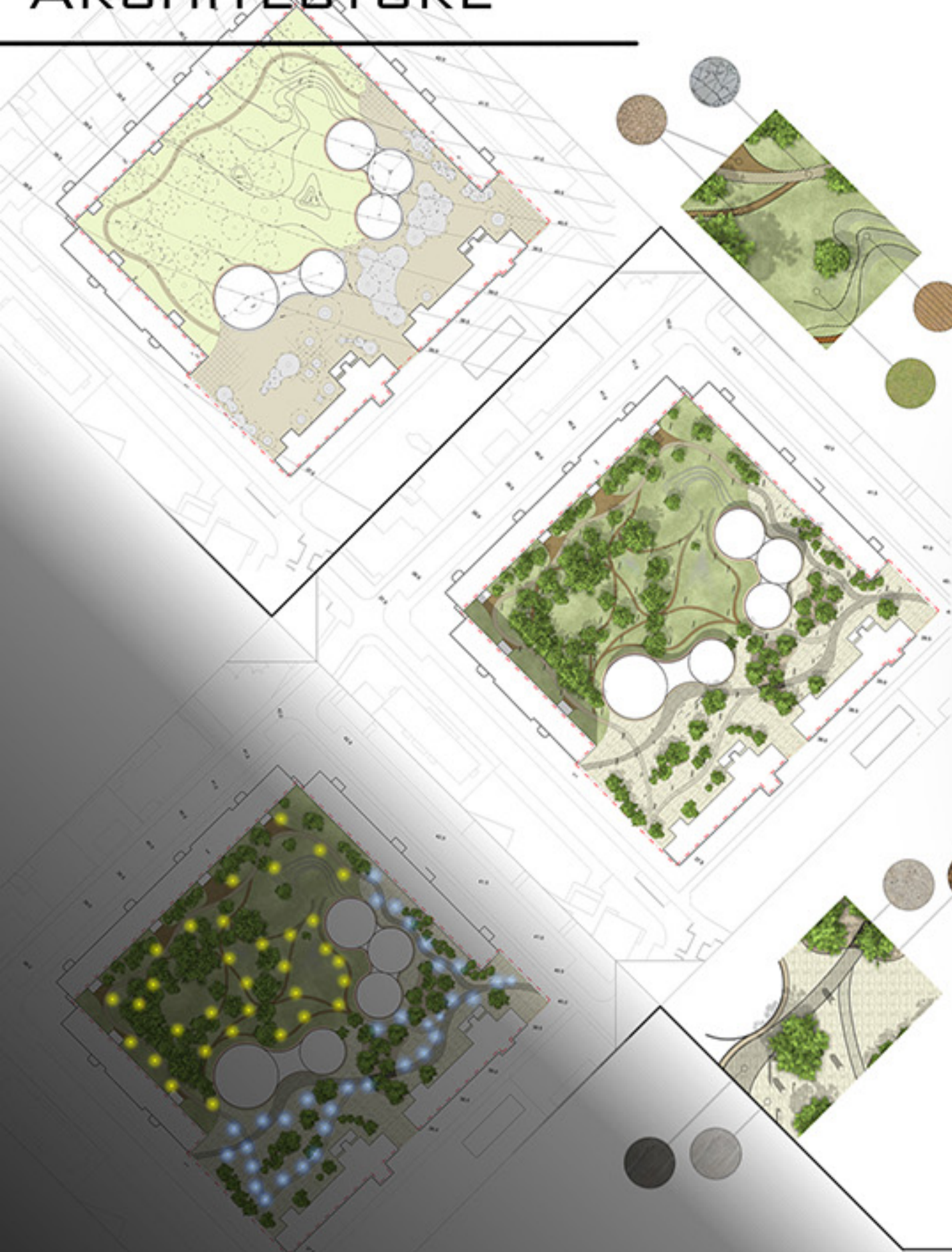
THE MAIN IDEA OF A DESIGN IS TO ENSURE COMFORTABLE LIVING WITH A MINIMALIZATION OF ENERGY CONSUMPTION:

- USAGE OF EARTH-SHELTERED HOUSE IDEA;
- SHADE CONSTROL WITH USE OF FOTOVOLTAIC GLASS PANELS;
- GLASS PANELS LAYOUT PROVIDING PROPER SUN DISTRIBUTION THROUGHOUT THE YEAR;
- RAINWATER USAGE;.



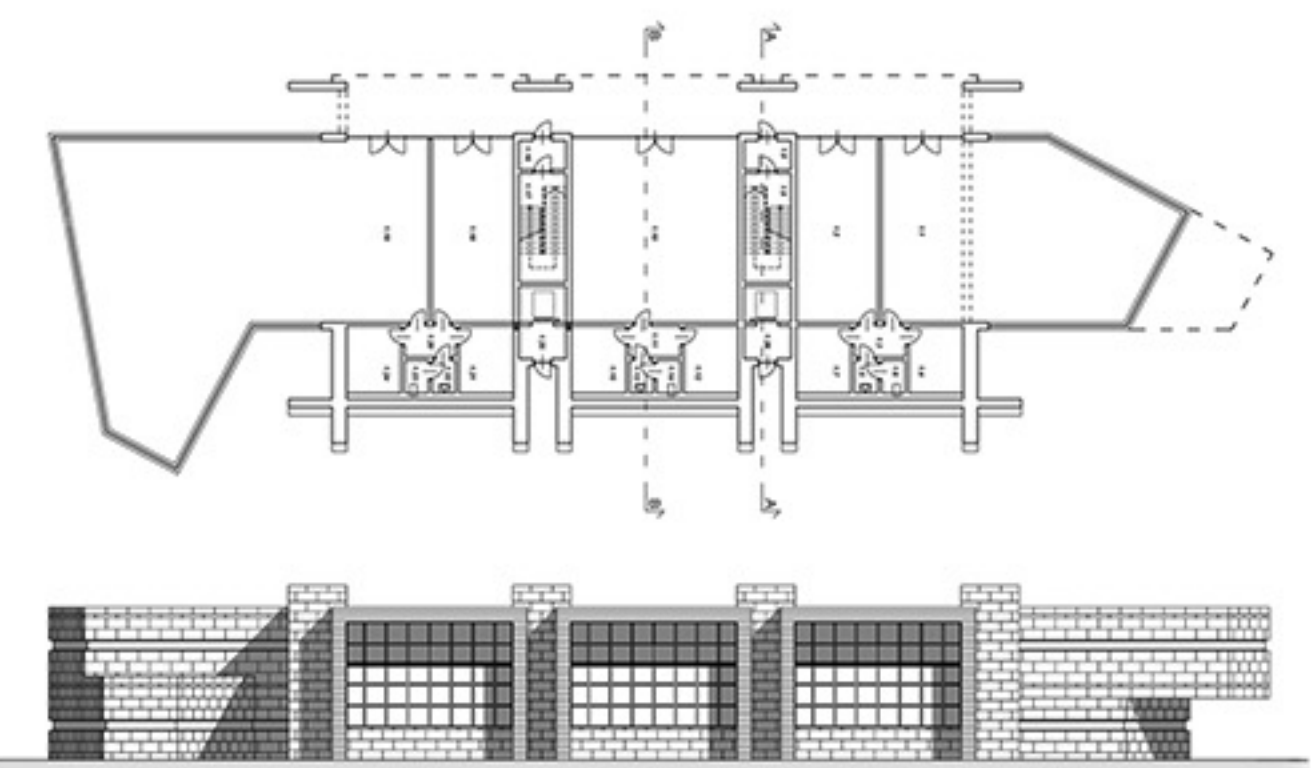
# ARCHITECTURE

# CO-WORKING CENTRE CONCEPTUAL DESIGN URBAN AND ARCHITECTURAL DESIGN



# ARCHITECTURE

## SHOPPING CENTRE AND SURROUNDING CONCEPTUAL DESIGN VISUALISATIONS AND TECHNICAL DRAWINGS



# URBAN DESIGN

# LAND DEVELOPEMNT AROUND THE REGIONAL COURT IN RZESZOW CONCEPTUAL DESIGN

## ANALIZY STANU PROJEKTOWANEGO



PLAN SYTUACYJNY 1:500



### OPIS PRZESTRZENI

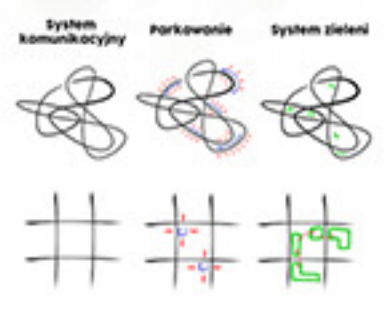
- 1 PRZYSTANEK AUTOBUSOWY
- 2 PLAC PRZED BUDYNKIEM BIUROWYM
- 3 STREFA WYPOCZYWKOWA BIUROWCA
- 4 SCENA ZEWNĘTRZNA
- 5 KLADKA NAD KIRKUTEM
- 6 POCZĄTEK ALI
- 7 PARKING POD BUDYNKIEM BIUROWCA
- 8 KAWIARNA ZEWNĘTRZNA NA PLACU
- 9 SEWER HOTELOWY



- BARCELONA:**
- MODUŁOWA SIATKA ULIC
  - BLOKA ZABUDOWY O SOCIETYCH NADZIKACH
  - ZIELEN DLABÓW KOMUNIKACYJNYCH
- PARYZ:**
- SZEROKIE ALEJE
  - ZABUDOWA NIE WYŻSZA NIŻ 20 METRÓW
  - OKRĄGLE PLAZE
  - JEDNOLITOŚĆ STYLISTYCZNA DANYCH ULIC
- CHICAGO:**
- NABRZEŻE PRZEZNACZONE DLA MIESZKAŃCÓW
  - REGIONALNY SYSTEM AUTOSTRAD
  - NOWA JAKOŚĆ DWORCÓW KOLEJOWYCH
  - SYSTEM PARKÓW ZEWNĘTRZNYCH
  - ARANŻACJA ULIC
  - PUBLICZNE CENTRA KULTURY



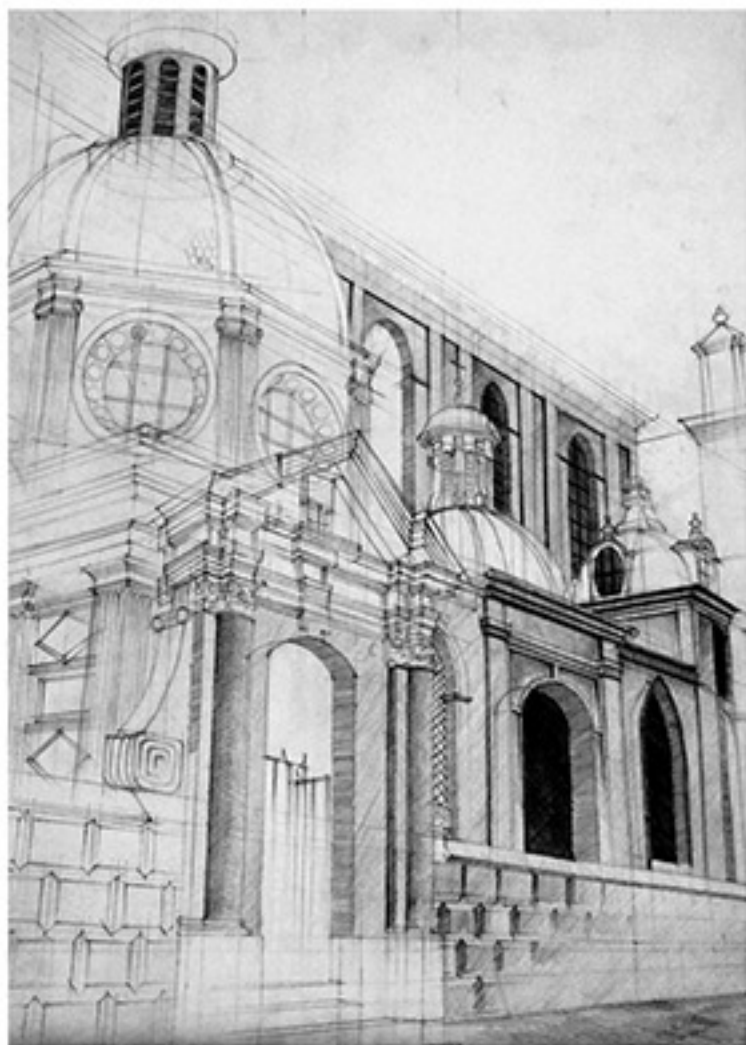
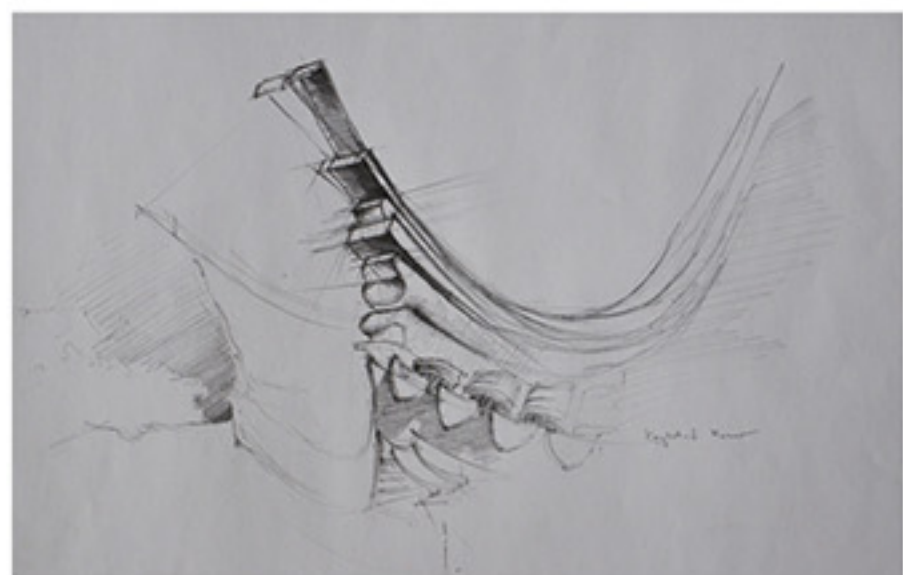
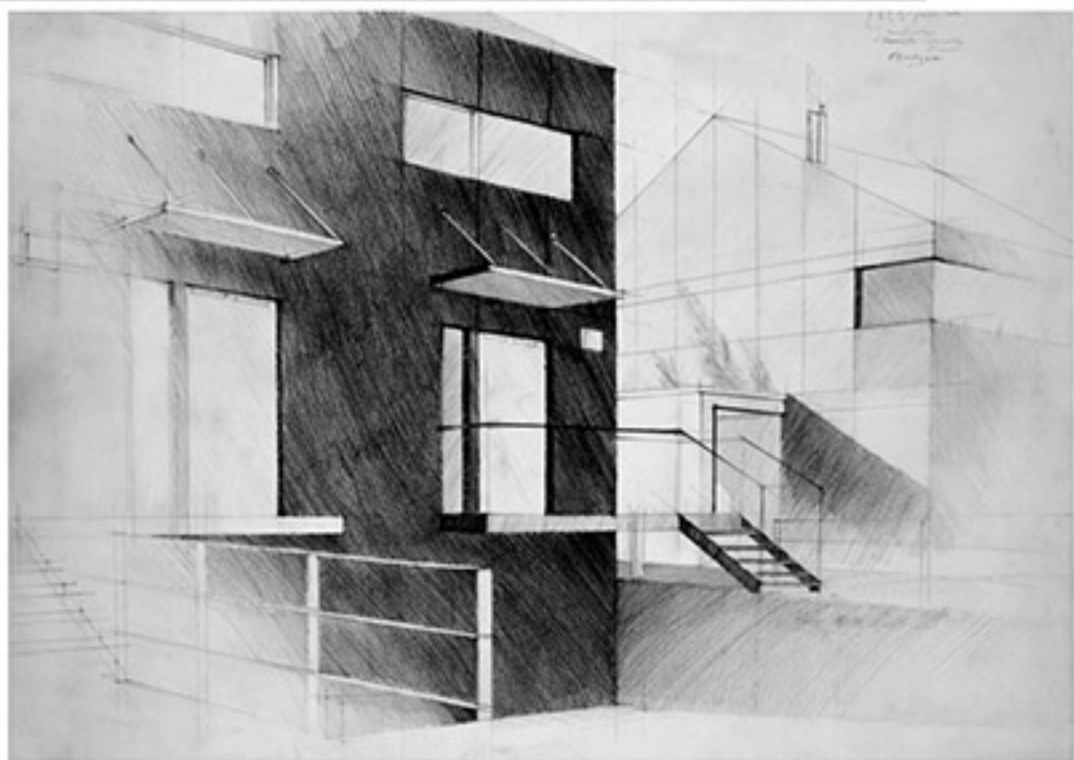
### PIKTOGRAMY



# VISUALIZATIONS

OFFICE BUILDING IN RZESZOW  
CONCEPTUAL AND PERMIT DESIGN





# MODEL-MAKING

---

SINGLE FAMILY HOUSE RECONSTRUCTION

I DESIGN AND MAKE AN ARCHITECTURAL MODELS OF DIFFERENT TYPE, SCALE AND INTENDED USE. MOCKUPS ARE ESSETIAL PART OF CONCEPTUAL DESIGN - THEY ALLOW US TO CHECK THE DESIGN ENTIRELY AND ARE VERY USEFUL IN PROJECTS ADVERTISING. EVERY MODEL IS MADE WITH A HUGE CAREFULNESS. I AM STRIVING FOR PERFECTION IN EVERY SINGLE DETAIL.



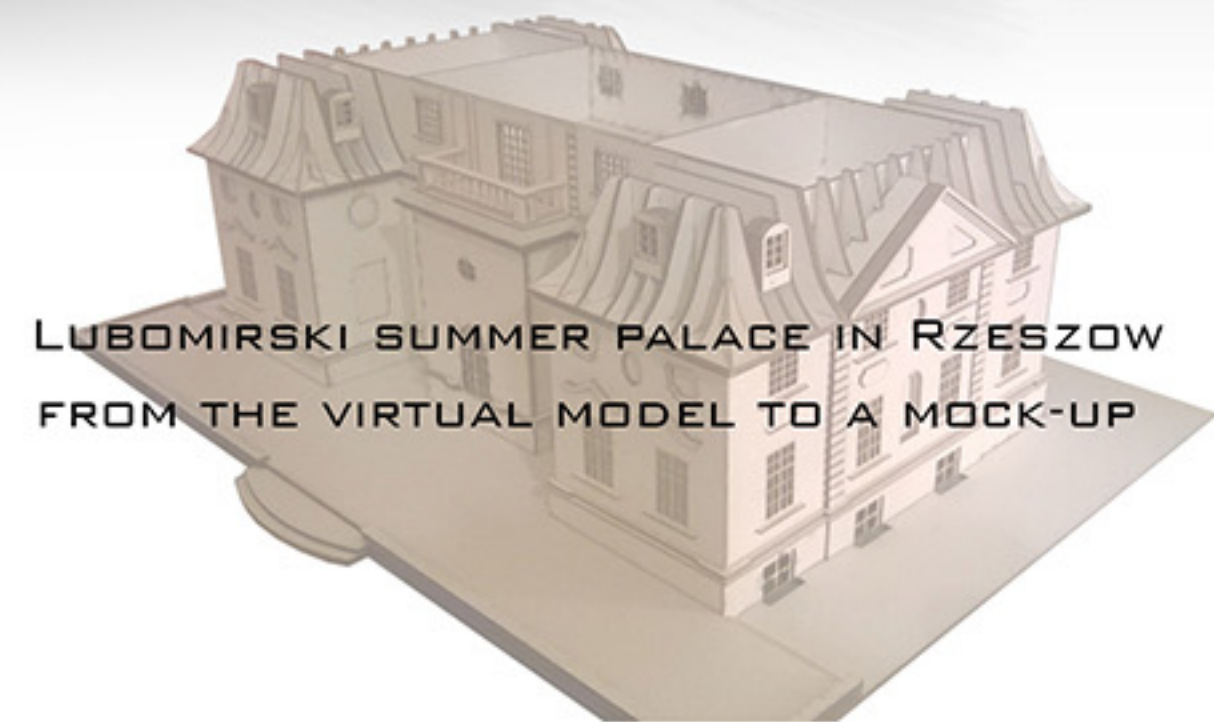
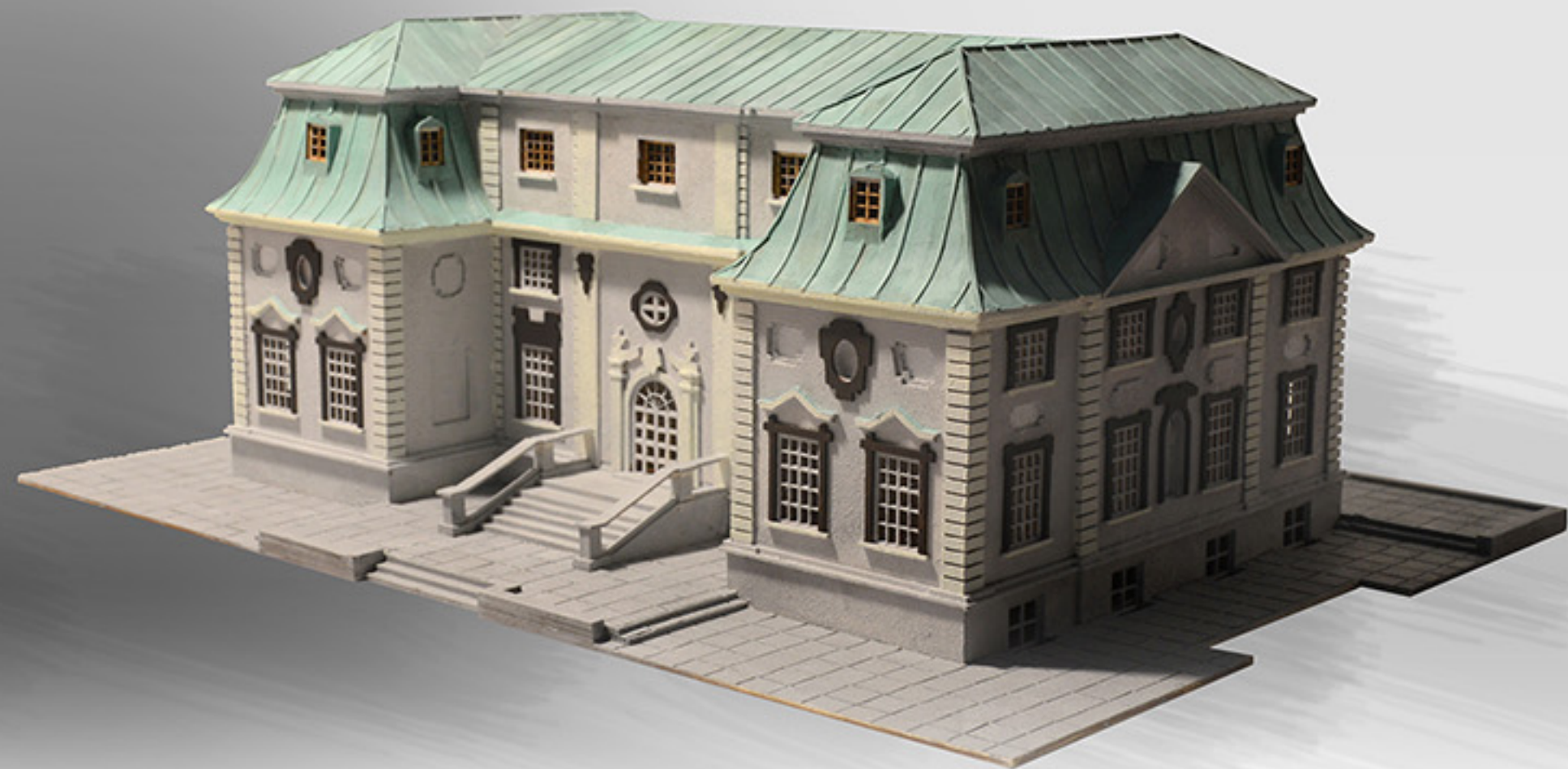
MADE IN





# MODEL-MAKING





LUBOMIRSKI SUMMER PALACE IN RZESZOW  
FROM THE VIRTUAL MODEL TO A MOCK-UP

# PORTFOLIO